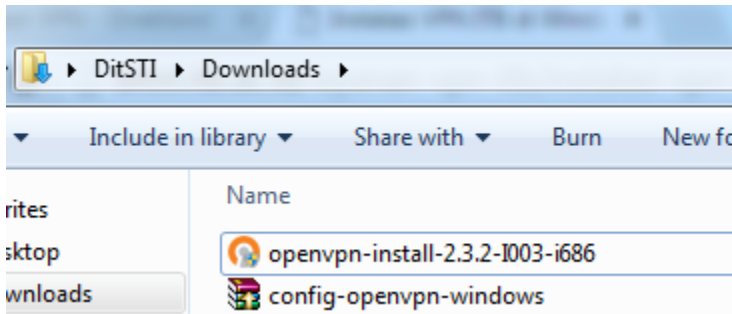
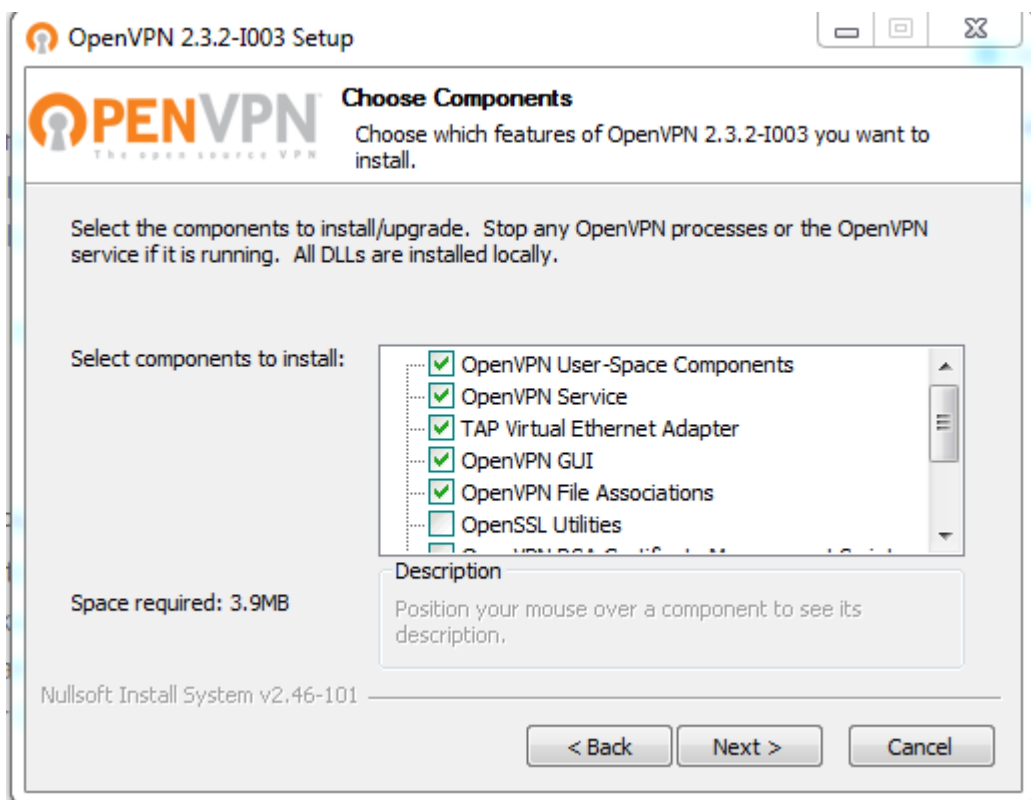
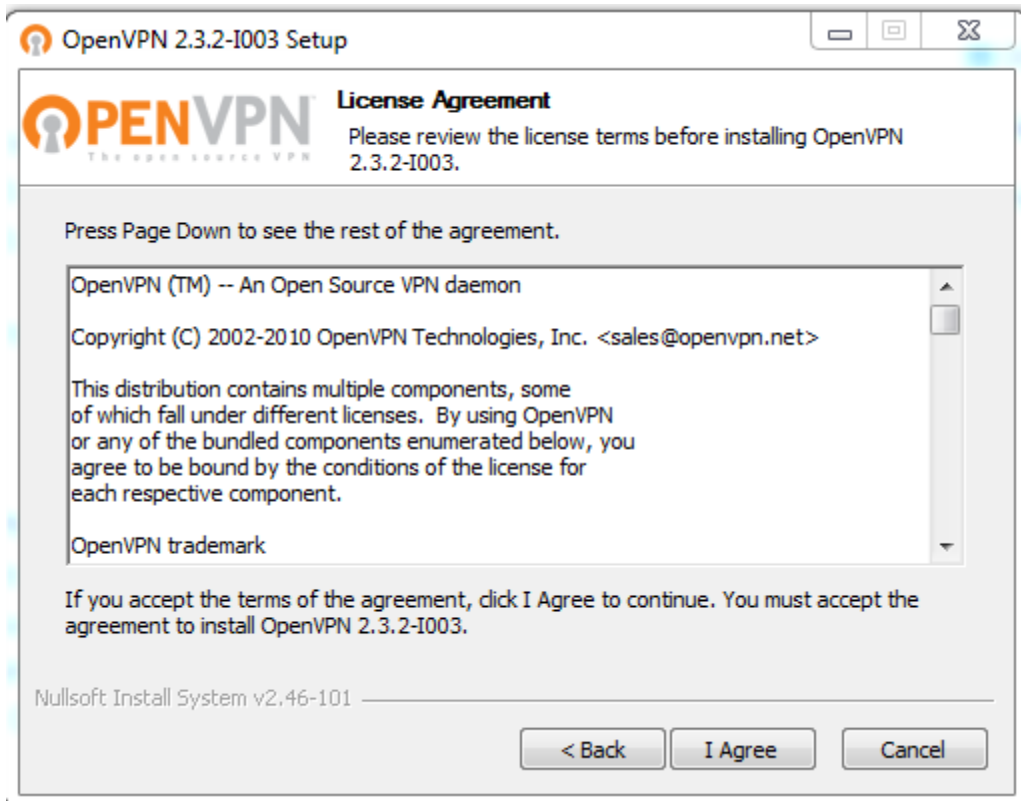
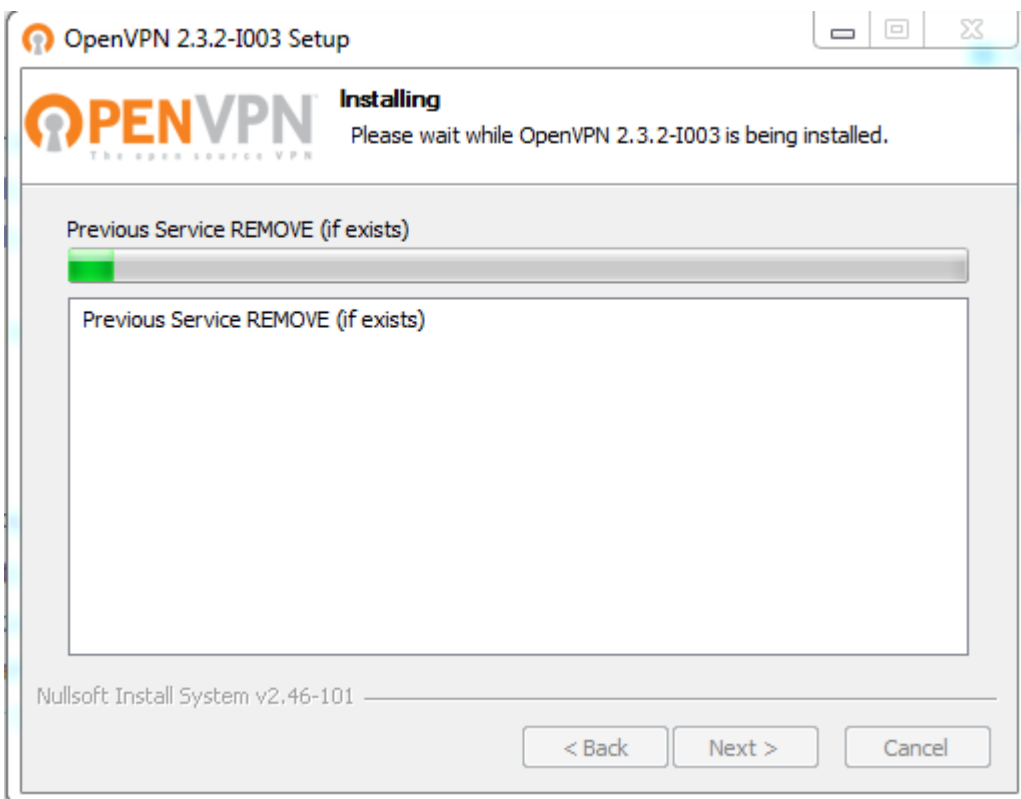
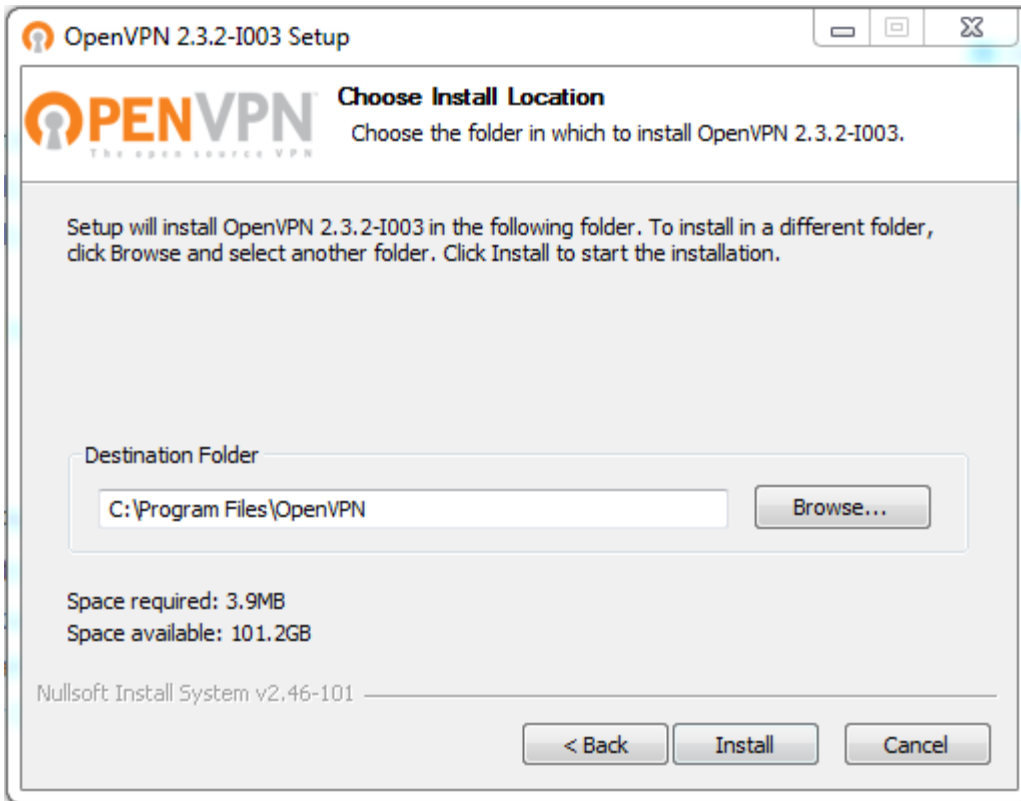


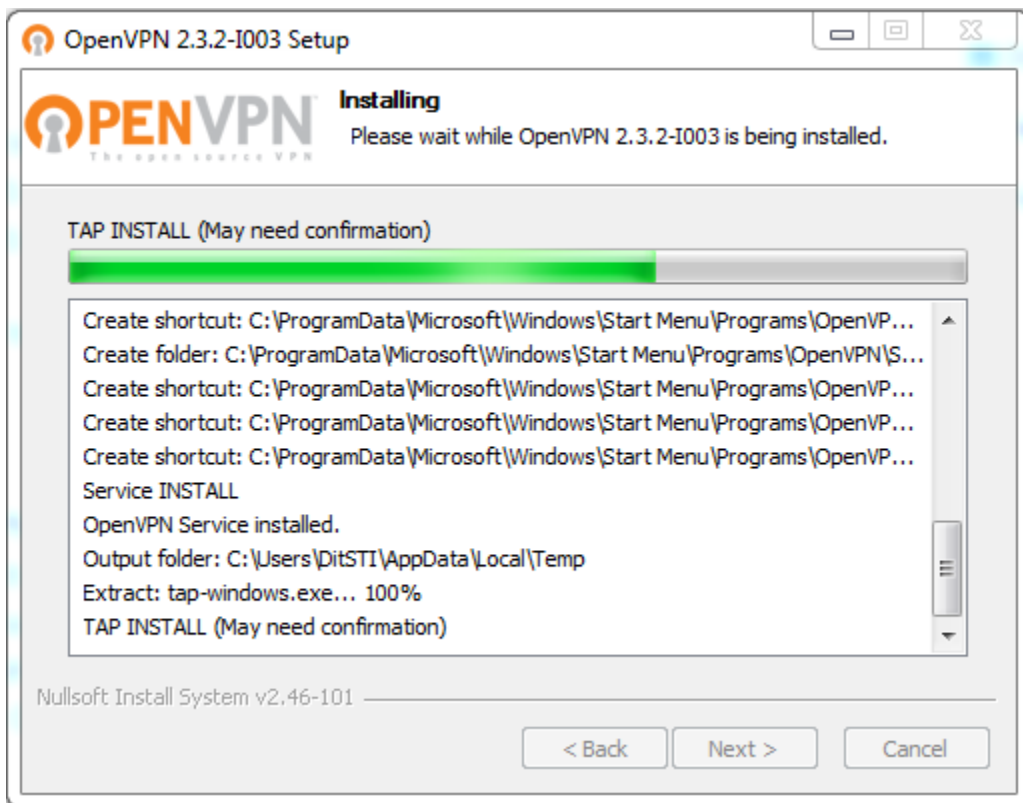
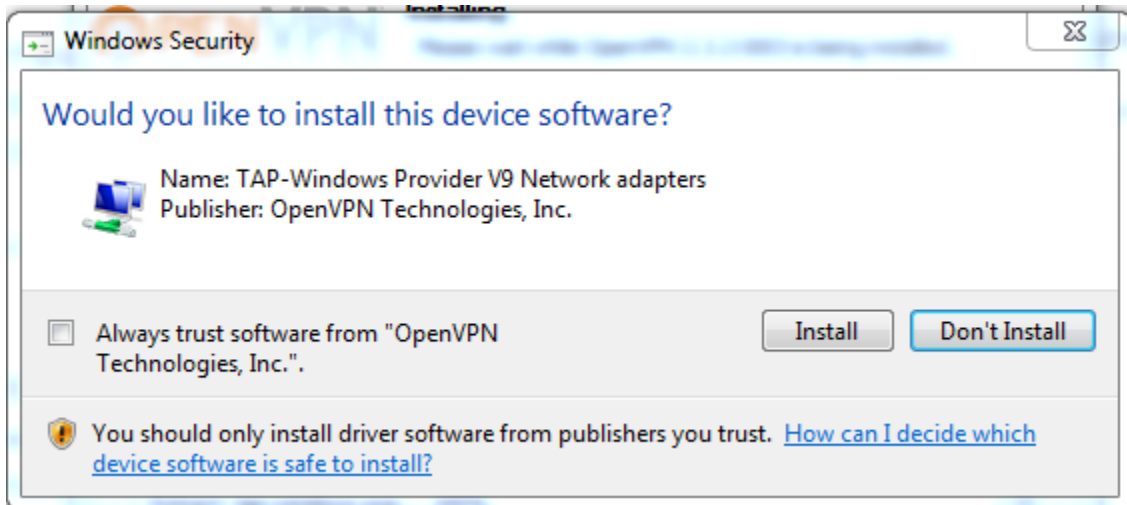
Instalasi VPN ITB di Windows 7

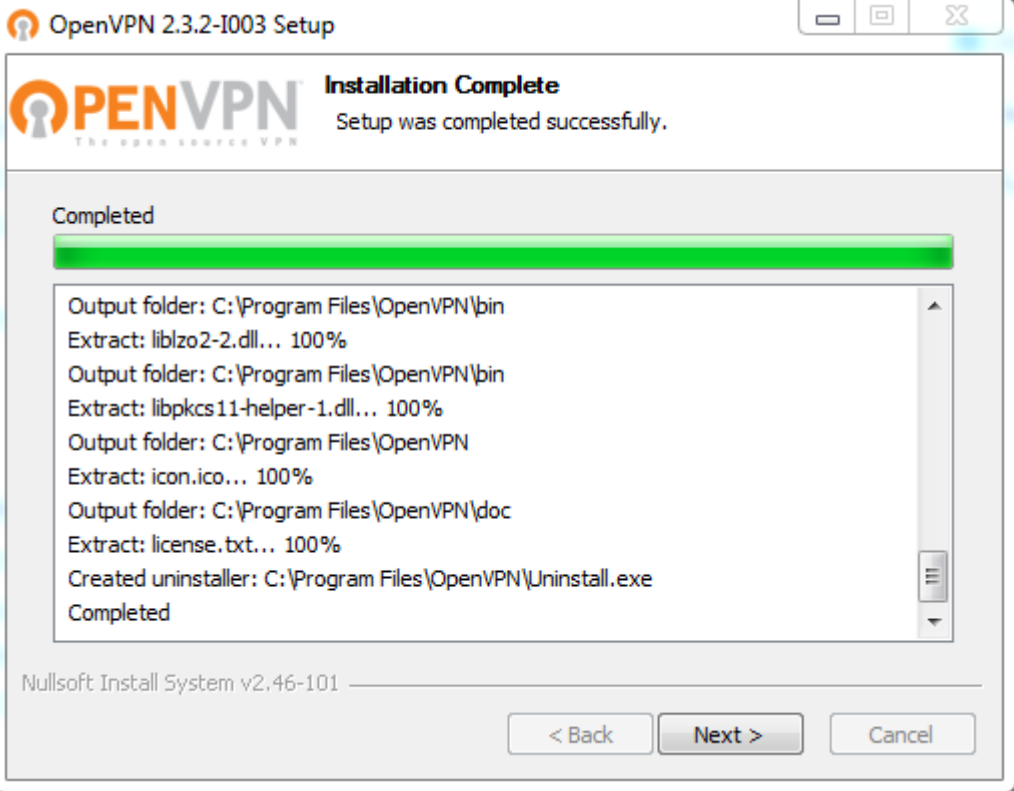
1. Download aplikasi OpenVPN dan konfigurasi VPN ITB
<http://vpn.itb.ac.id/openvpn/Windows/openvpn-install-2.3.2-I003-i686.exe>
2. Khusus pengguna Windows 7, yang bisa menjalankan konfigurasi VPN ITB hanya versi 32 bit.



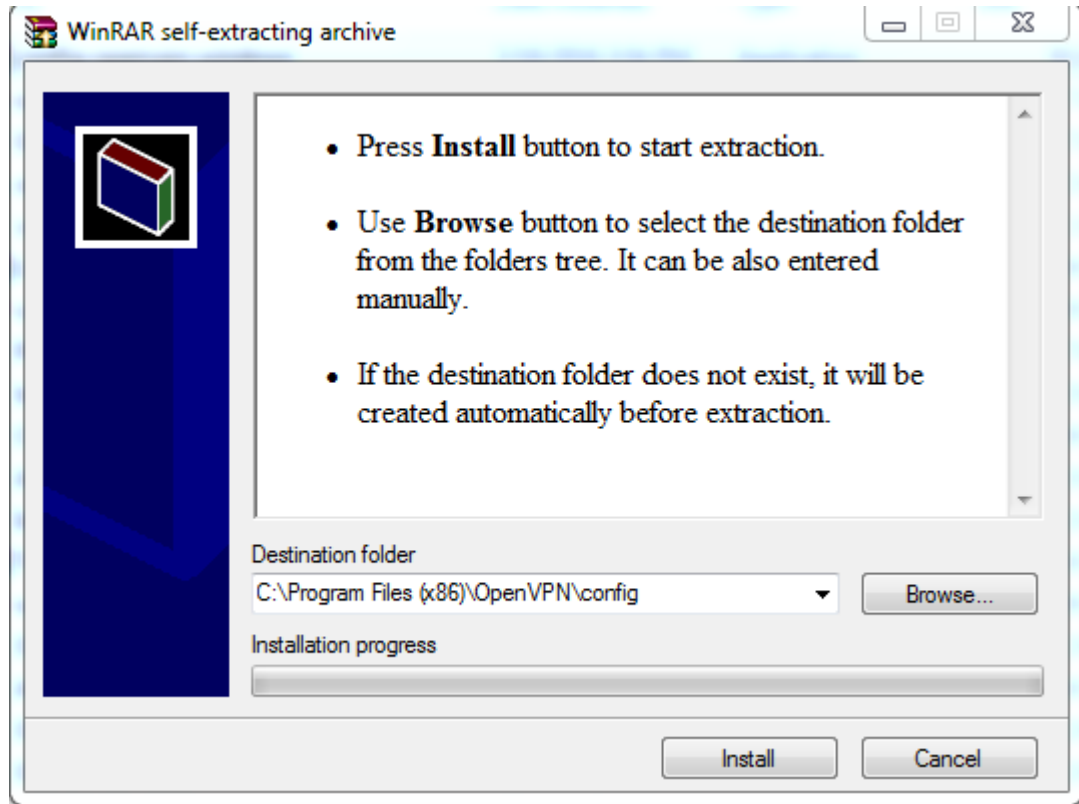




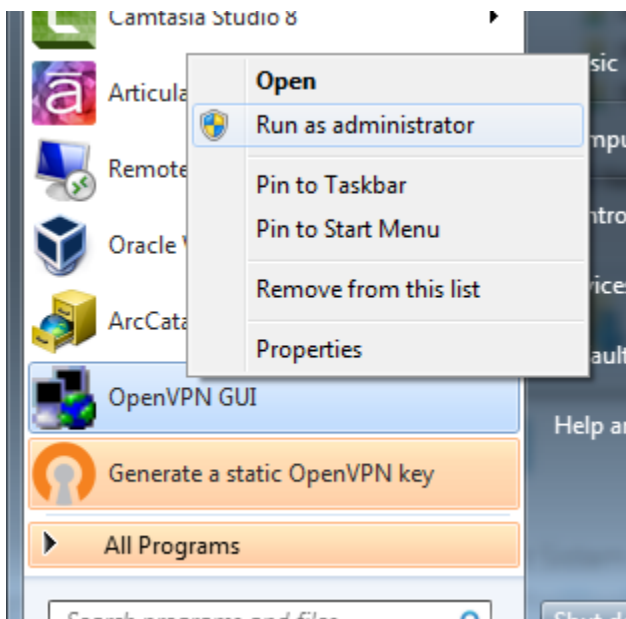


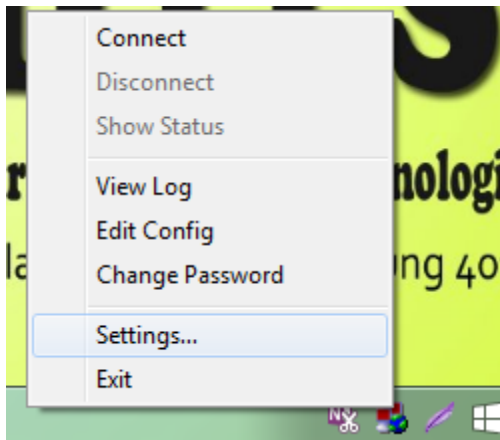
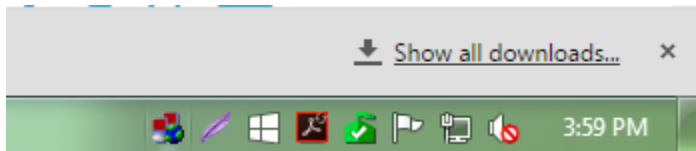


3. Install konfigurasi VPN ITB

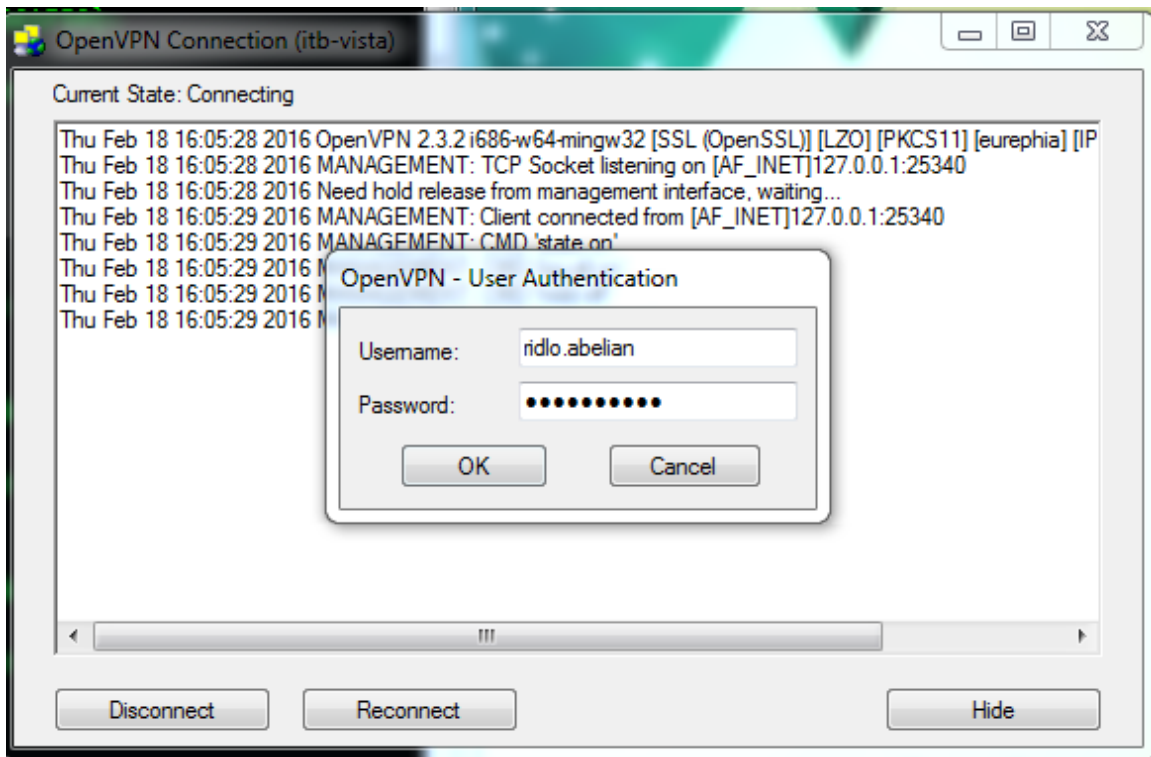


4. Jalankan aplikasi OpenVPN dengan “Run as administrator”





5. Masukkan user dan password A13



6. Selesai (mendapat alamat IP 167.205.71.x)

```
cmd Select C:\Windows\system32\cmd.exe
C:\Users\DitSTI>ipconfig

Windows IP Configuration

Ethernet adapter Local Area Connection 2:

    Connection-specific DNS Suffix  . :
    Link-local IPv6 Address . . . . . : fe80::6472:b8e:df35:e64a%26
    IPv4 Address. . . . . : 167.205.71.150
    Subnet Mask . . . . . : 255.255.255.0
    Default Gateway . . . . . :

Ethernet adapter Local Area Connection:

    Connection-specific DNS Suffix  . :
    Link-local IPv6 Address . . . . . : fe80::c114:32d4:6dd5:e5b5%11
    IPv4 Address. . . . . : 167.205.78.58
    Subnet Mask . . . . . : 255.255.255.0
    Default Gateway . . . . . : 167.205.78.1

Ethernet adapter VirtualBox Host-Only Network:

    Connection-specific DNS Suffix  . :
    Link-local IPv6 Address . . . . . : fe80::e476:ebbd:86a9:86e6%14
    IPv4 Address. . . . . : 192.168.56.1
    Subnet Mask . . . . . : 255.255.255.0
    Default Gateway . . . . . :

Tunnel adapter isatap.{3C23EE22-E792-486F-8443-AA5C07661F59}:

    Media State . . . . . : Media disconnected
    Connection-specific DNS Suffix  . :
```